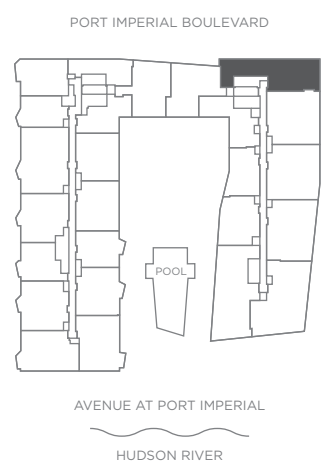
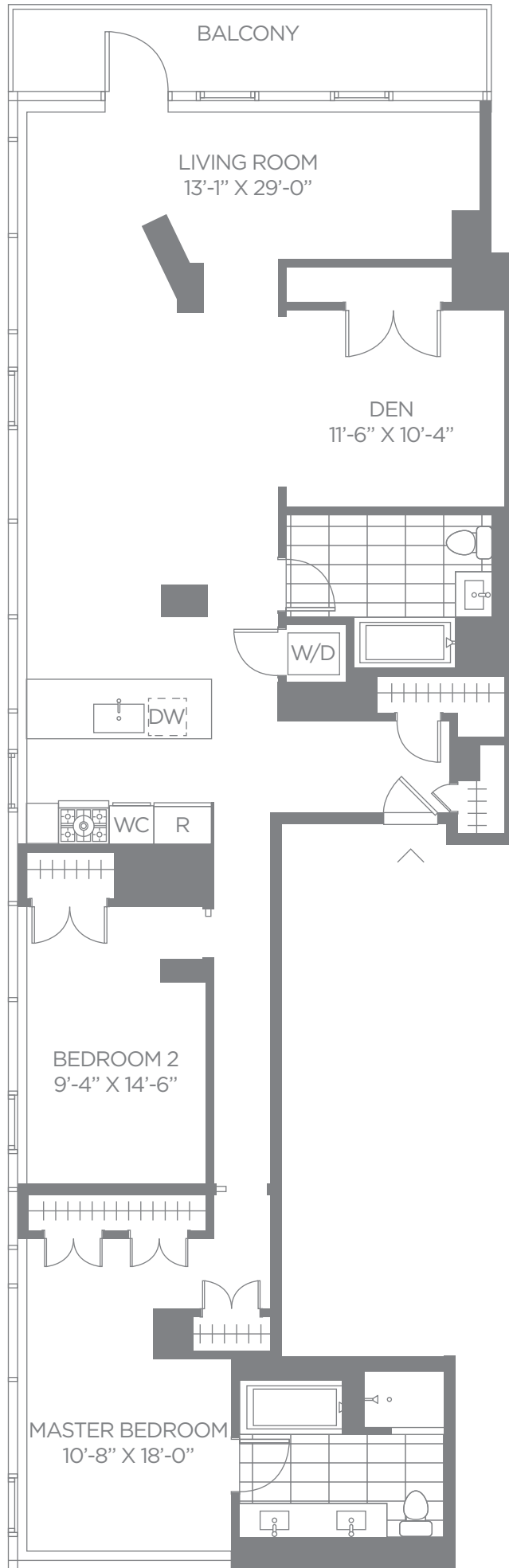




AVORA

RESIDENCE 501

2 BEDROOM
2 BATHROOM
DEN
BALCONY
1,649 SQ FT



Avora at Port Imperial
800 Avenue at Port Imperial
Weehawken, NJ 07086

201.223.1168
AVORALIVING.COM

NOTES:



All floorplans and renderings are artist's conceptions and are not intended to be an actual depiction of the walls, windows, walks, driveways, landscaping, patios or decks. All dimensions, plans and elevations are approximate and subject to normal construction variances and tolerances. All square footage calculations are based on exterior wall-to-wall dimensions. All interior room dimensions are based on interior wall-to-wall measurements. The Avora floorplans and elevations are protected by Federal copyright laws. We reserve the right to make changes due to unforeseen conditions, in accordance with the Offering Plan. This floor plan may appear in reverse. Prices and availability are subject to change without notice. The complete offering terms are in an offering plan available from Sponsor. File R-4774. Obtain a copy of the State of New York CPS-12 application and exhibits prior to purchase File No. CP16-008. © 2018 Landsea Homes. All Rights Reserved.